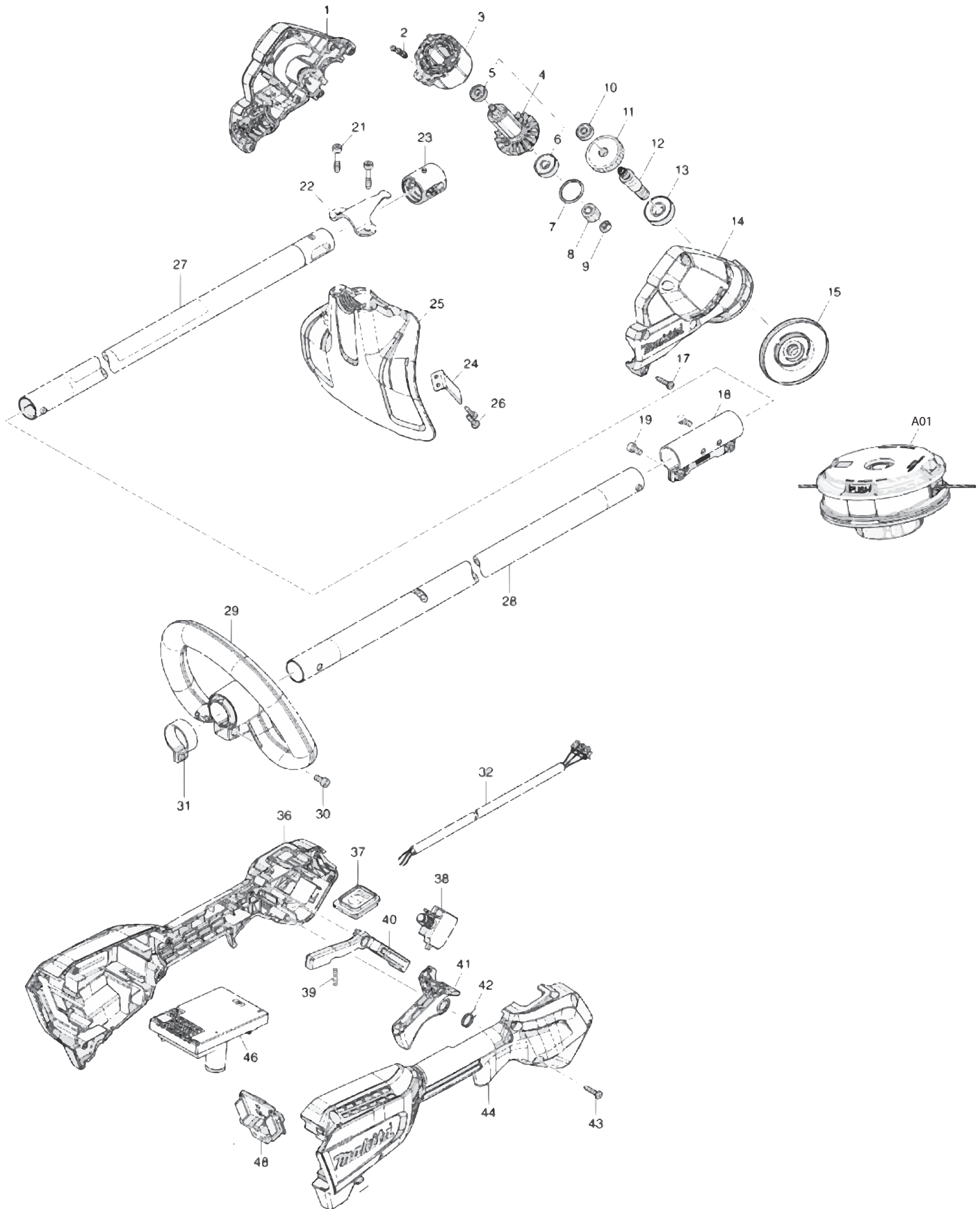




XRU23



Products with multiple versions are listed in subsiding order with the newest version on top not indented.

Section	Fig. No.	Part No.	Description	XRU23	Tech Bulletin	Notes
1	1	183R54-1	MOTOR HOUSING SET	1		INC. 14
1	2	652069-6	FLAT HEAD SCREW M3X6	3		
1	3	629A22-3	STATOR	1		
1	4	519643-2	ROTOR ASS'Y	1		INC. 5,6
1	4	210065-6	BALL BEARING 625ZZ	1		
1	5	210235-7	BALL BEARING 625ZZ	1		
1	6	210025-8	BALL BEARING 627ZZ	1		
1	6	210236-5	BALL BEARING 627ZZ	1		
1	7	213843-3	O-RING 21	1		
1	8	227883-5	HELICAL GEAR 11	1		
1	9	931302-2	HEX. NUT M6	1		
1	10	210065-6	BALL BEARING 625ZZ	1		
1	10	210235-7	BALL BEARING 625ZZ	1		
1	11	227830-6	HELICAL GEAR 32	1		
1	12	327678-7	CUTTER SHAFT	1		
1	13	211131-2	BALL BEARING 6001DDW	1		
1	13	210216-1	BALL BEARING 6001DDW	1		
1	14	183R54-1	MOTOR HOUSING SET	1		INC. 1
1	15	140W47-1	RECEIVE WASHER COMPLETE	1		
1		213134-2	O-RNG 11	1		INC WITH FIG 15
1	17	266326-2	TAPPING SCREW 4X18	8		
1	18	347747-8	JOINT 24	1		
1	19	922207-7	HEX. SOCKET HEAD BOLT M5X10	2		
1	21	251513-6	H.S.H.BOLT M5X25	2		
1	22	347734-7	PROTECTOR CLAMP	1		
1	23	424567-8	RUBBER SLEEVE 24	1		
1	24	346855-2	CUTTER	1		
1	25	412580-8	PROTECTOR N 330	1		
1	26	266326-2	TAPPING SCREW 4X18	2		
1	27	140W44-7	PIPE COMPLETE A	1		
1	28	140W45-5	PIPE COMPLETE B	1		
1	29	457937-6	LOOP HANDLE 24	1		
1	30	922212-4	HEX. SOCKET HEAD BOLT M5X12	1		
1	31	347011-7	PIPE CLAMP 29	1		
1	32	699157-8	POWER SUPPLY CORD UNIT	1		

Products with multiple versions are listed in subsiding order with the newest version on top not indented.

Section	Fig. No.	Part No.	Description	XRU23	Tech Bulletin	Notes
1	36	183R55-9	GRIP HOUSING SET	1		INC. 44
1		263005-3	RUBBER PIN 6	3		INC WITH FIG 36
1	37	140W41-3	SWITCH CIRCUIT COMPLETE	1		
1	38	651494-8	SWITCH C3JW-1A-PA-2	1		
1	39	233101-1	COMPRESSION SPRING 4	1		
1	40	412863-6	LOCK OFF LEVER	1		
1	41	459758-2	SWITCH LEVER	1		
1	42	233622-3	TORSION SPRING 12	1		
1	43	266326-2	TAPPING SCREW 4X18	8		
1	44	183R55-9	GRIP HOUSING SET	1		INC. 36
1	46	620D78-7	CONTROLLER	1		
1	48	644809-6	TERMINAL	1		
1	A01	191R00-0	TRIMMER HEAD 96-M10L SET	1		
1	A03	783202-0	HEX. WRENCH 4	1		Not Pictured